

Sustainability **Policy**



Sustainability Policy

Bom Futuro guides its actions by the principles of its Sustainability Policy and Code of Conduct, adopting the concepts of circular economy in conducting its activities, in order to promote synergy and reduce waste.

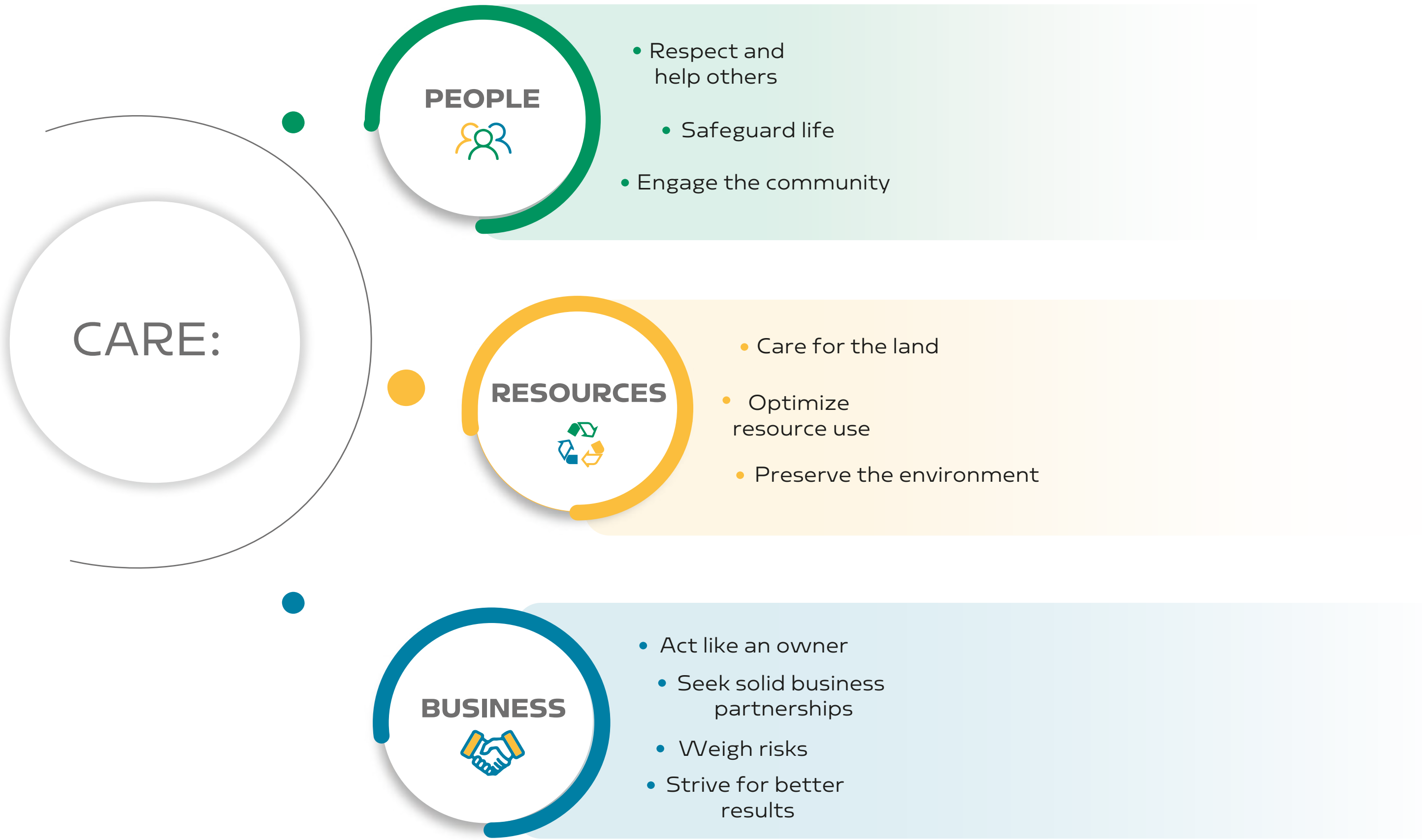
Good future sustainability policy establishes our way of being and acting in the pursuit of our purpose:

Help Feeding, Clothing and Powering the World!

In this journey we understand that taking care of people, resources and business are fundamental for our goals of longevity, growth and economic return to be based on sustainable practices.

Without distinction, we must all practice the "3 commandments" below:

MANAGEMENT FOR SUSTAINABILITY





Caring for people

Respect and help for others

Treat everyone with respect, develop and value human beings, help others.

Caring for life

Safety first. We must take care of each other, working together to avoid accidents and reporting any risks to our leaders.

Engage the community

Encourage community participation, collaborate or volunteer in social work and projects.

The background of the slide is a photograph of a lush green forest with a calm lake in the foreground. Several white birds are seen flying over the water. A large, semi-transparent yellow circle is centered on the page, containing the main text. On the left side of the slide, there is a vertical bar with a dark green top section and a light green bottom section.

Taking care of resources

Caring for the Earth

We derive our sustenance from the Earth. Our purpose comes from the earth: Help Feeding, Clothing and Powering the World! Adopting good management and cultivation practices avoids exhausting its potential and allows for the maintenance and growth of production without exploring new areas.

Make good use of resources

Using available resources (natural resources, inputs, materials, vehicles, machines, buildings and facilities) correctly and efficiently, avoiding waste, helps preserve scarce resources and reduces costs.

Preserve the environment

Taking care of water, springs, and the water table, preserving legal reserve and permanent preservation areas, avoiding the silting of rivers, respecting nature (plants and animals), collecting and separating our waste to reuse it, and avoiding contamination of soil, water, and air are some of the good practices that we should practice in our daily lives, at work, at home, and in the community.



Taking care of business

Having an owner attitude

The workplace is an extension of our home, where we seek our livelihood and the realization of our dreams. When we see the company as our own, we increase our satisfaction and willingness to face daily challenges. When we feel part of the business, we are more productive and help build a great workplace, which helps the company remain solid, competitive and prosperous.

Seek solid business partnerships

We see our customers and suppliers as business partners. Seeking to strengthen our commercial ties through solid and lasting partnerships is our expectation.

Weighing risks

Managing business risks is a matter of survival. Whether operational, regulatory, financial or strategic risks, it is important and healthy to measure and mitigate risks, keeping them under control and surveillance.

Search for better results

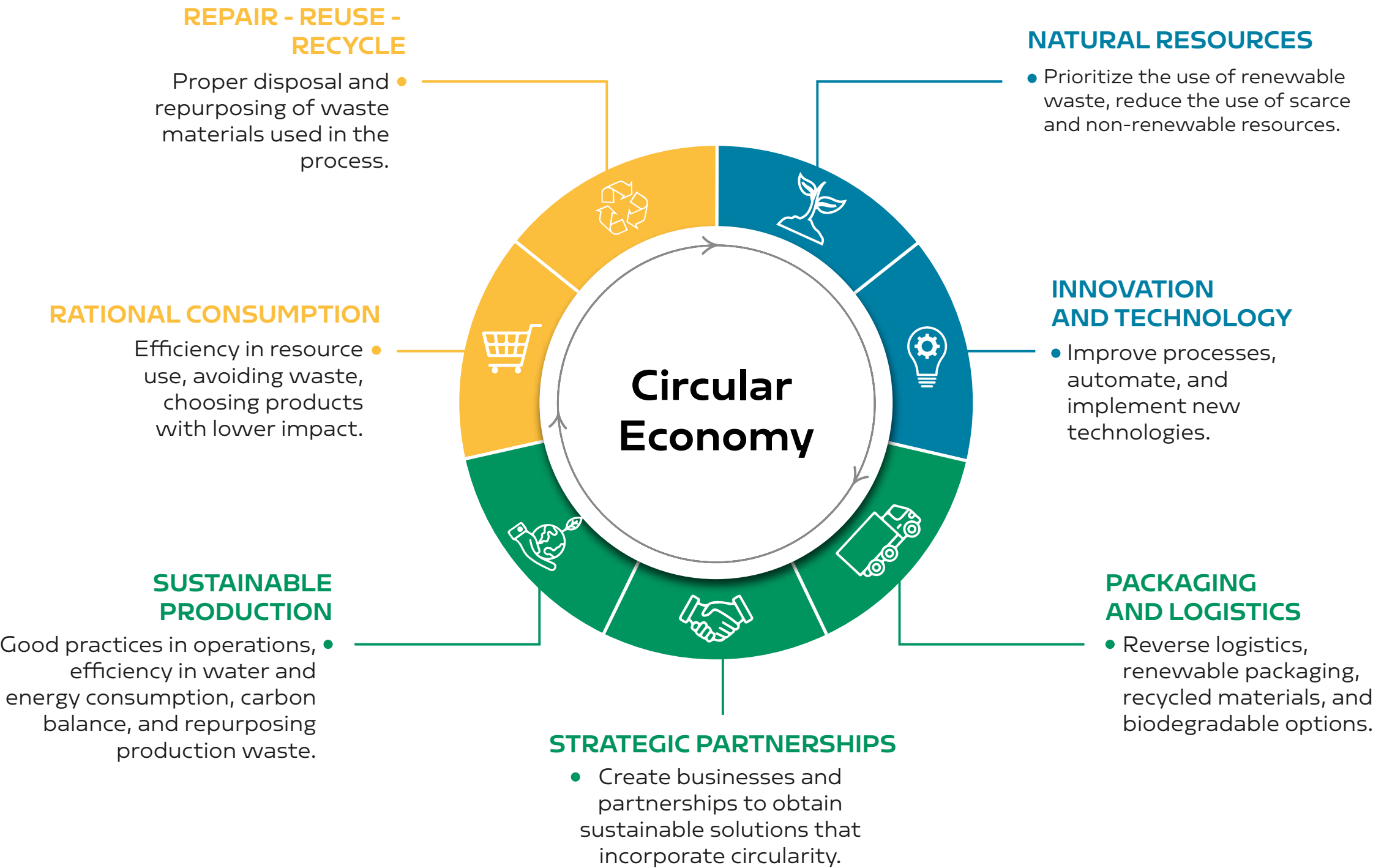
The objective of every business is profit. Produce well, control expenses and seek to improve our way of doing things.

Circular Economy

The circular economy promotes the effective integration of processes with the business culture and encourages diversification, synergy and efficiency, proposing to act with simplicity, innovation and sustainability – values cultivated by Bom Futuro.

OUR HIGHLIGHTS IN CIRCULAR ECONOMY

- Seed and adjuvant production
- Production of biological pesticides
- Crop-livestock integration
- Feed production using waste
- Self-sufficient generation and consumption of electrical energy
- Own fleet and reverse logistics
- Modern fleet with reduced emissions
- Cotton Cultivation Cycle – Zero Waste
- Own reforestation – Energy source and improvements
- Production and use of natural gas in meal preparation
- Connectivity in the field combined with telemetry
- Separô Program – 14 years managing waste better





bomfuturo.com.br

@bomfuturooficial